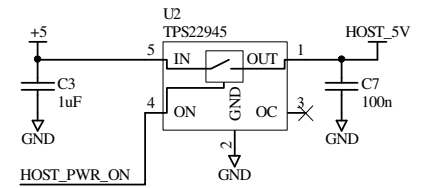


MAX3421 D+/D- signals are protected internally against ESD.

+5V rail must be supplied externally to this schematic.



USB 5V Supply: 100mA Current limited switch

Note: Early revisions of the MAX3421E have Silicon errors. You should be sure to buy parts at Revision 3 or above.

If you only have one device attached to the SPI bus then you don't need the decoding circuit below. Just connect SPI\_CS2 to the MAX device's SS# input.

